

Technical Data for WWF Film

Floor Heating Film

Product Description WWF 15 NW – WWF 15 GNW

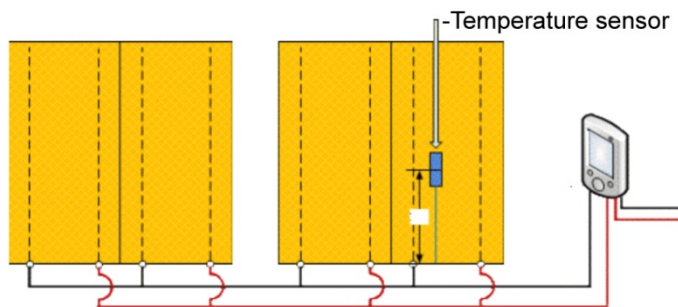
Model	Overall Minimum Size	(Half Width) Overall Maximum size per roll	(Full Width) Overall Maximum Size per roll	Voltage, Vac.	Ohm/FT Squared	Amps/ft squared	Maximum Density W/ft squared	Maximum Watts.	Maximum Length
WWF15NW	8in x 20in	1.7 ft x 64 ft	3.35 ft x 32ft	120	985	0.122	15	1650	32
WWF15NW	8in x 20in	1.7 ft x 80 ft	3.35 ft x 64ft	240	3940	0.061	15	3300	64
WWF15GNW	8in x 20in	1.7 ft x 64 ft	3.35 ft x 32ft	120	985	0.122	15	1650	32
WWF15GNW	8in x 20in	1.7 ft x 80 ft	3.35 ft x 64ft	240	3940	0.061	15	3300	64

Size: 40" x 328' per roll

Materials: PET, PET non-woven fabric, heating material, adhesive, copper bars

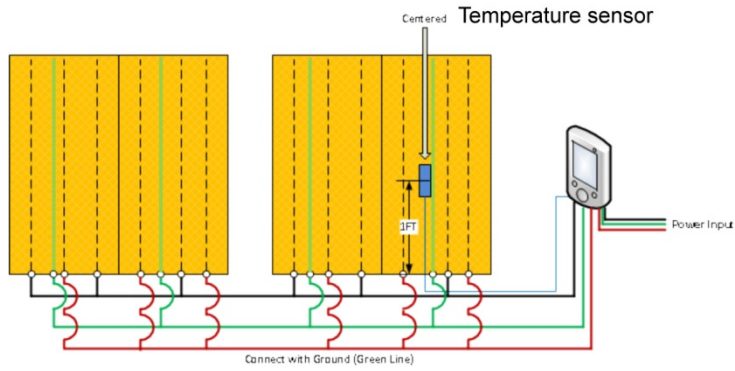
Features: 45mm (1/60") thickness, which is thin and durable. Can be installed with 120VAC or 240VAC.

Usage: WWF heating film can be used underneath any type of flooring in manufactured housing, trailers, and homes; under concrete slabs in warehouses and pole barns and modular buildings. Available with non-woven fabric on the exterior side for installation to tile, thinset and concrete.

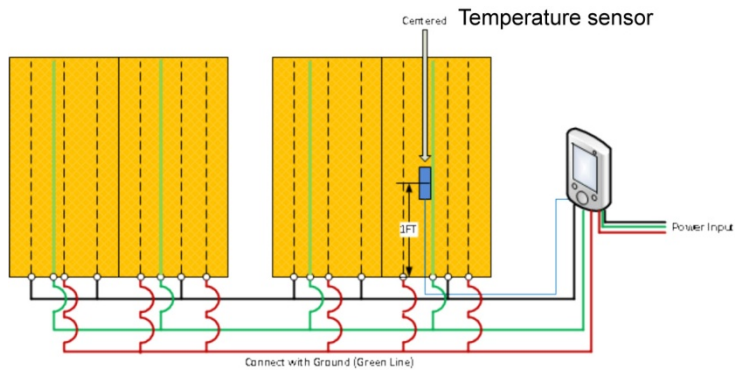


A. Wiring diagram for Model no.

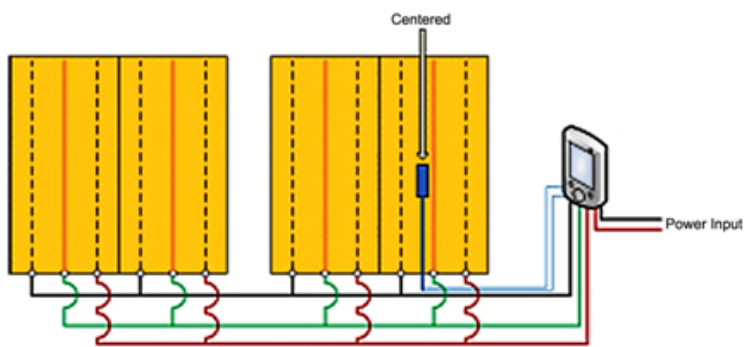
WWF15NW Wired for a 240VAC



B. Wiring diagram for Model no. WWF15NW for 120VAC



C. Wiring diagram for Model no. WWF15GNW for A 120VAC application



D. Wiring diagram for Model no. WWF15GNW for A 240VAC application

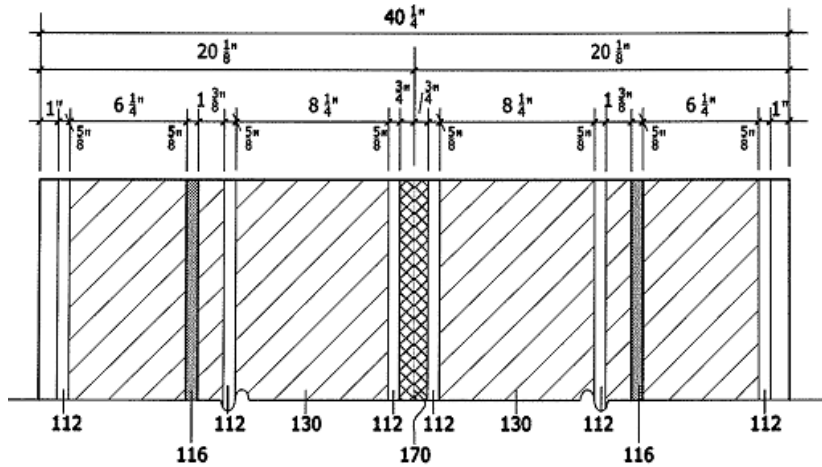


FIG. 1

WWFGNW 120/240VAC 60 Hz

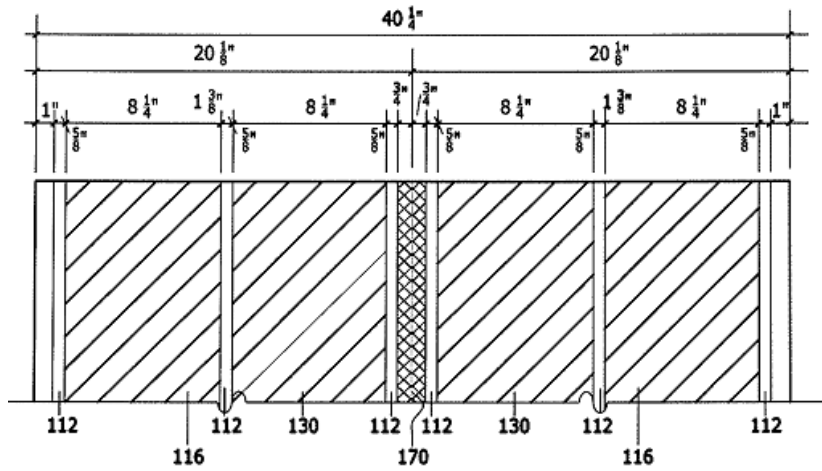



FIG. 2

WWFNW 120/240VAC 60 Hz




Radiant Heating Panel

Primary and Supplemental Heating

WARNING
RISK OF ELECTRIC SHOCK

ELECTRIC WIRING AND HEATING PANELS CONTAINED BELOW THE FLOOR. DO NOT PENETRATE FLOOR WITH NAILS, SCREWS OR SIMILAR DEVICES.



WARM WAVES
Far Infrared Heating System

INTENDED FOR THINSET INSTALLATION ONLY
SEE INSTALLATION INSTRUCTIONS
PROCEDIMIENTO PARA LA INSTALACION PEGAMENTO SOLO
MODEL WWFNW
Radiant Heating Panel 3097938
ISO 9001 ISO14001 CE
AC 120V/240V 15 WATT'S PER SF.
120VAC 60Hz MAXIMUM LENGTH 32 FEET
240 VAC 60Hz MAXIMUM LENGTH 64 FEET
LOT WWFNW-15 1106

